

SEPTEMBER 2011 | ISSUE 25

# LIBRARY NEWSLETTER

SHARE | Print Version | Past Issues | Subscribe |

SUPPORT US

## FEATURE STORY

**Grand Opening of**

# RE@D PolyU

Common Reading Programme 2011/12

[read more...](#)

## UPCOMING EVENTS

- 29** AUG Afghan Gold Photo Exhibition (29 August - 4 October 2011)
- 1** SEP READ@PolyU: Book Pick-up & Other Programme Events
- 7** OCT What You Always Wanted to Know About the Type of Information Resources (workshop)
- 18** OCT OneSearch & MetaSearch: One-stop Search for Library materials (workshop)

- Advanced Booking For New Research Carrels
- Renewing Library Loans on iPhone/SmartPhone
- OneSearch – New Platform for Discovering Lib Resources
- Library Exhibitions

## HIGHLIGHTS



- e-Learning Programme - Clarity English Programs
- e-Reference --- Credo Reference

## COLLECTIONS



- Managing References and Bibliographies

## RESEARCH CORNER



- New Librarians on Board
- Senior Staff Promotion
- Farewell

## PROFILE



- Successful Story On Integrating Information Literacy Programme to Academic Curriculum

## USER EDUCATION



- The Research Enhancement Centre (REC) is Ready!
- Current Awareness Centre
- Exhibition Hall & LibCafe@PolyU

## PREFERRED LIB SCENARIO



Publication Committee, Pao Yue-kong Library, The Hong Kong Polytechnic University, Hung Hom, Kowloon, Hong Kong | [Privacy Statements](#)

SEPTEMBER 2011 | ISSUE 25

# LIBRARY NEWSLETTER

HOME FEATURE STORY HIGHLIGHTS COLLECTIONS RESEARCH CORNER PROFILE USER EDUCATION PREFERRED LIB SCENARIO



## FEATURE STORY

### • READ@PolyU

#### \* What Is It About?

*READ@PolyU* is a new campus-wide common reading programme in which all PolyU full-time first year undergraduate students will read the same book. The selected book for the year 2011-2012 is *The Kite Runner* by Dr. Khaled Hosseini. If you are full-time first year undergraduate students, don't miss this chance to join this exciting programme.

#### \* 10 Things You Can Do

1. Pick up a Free Copy of *The Kite Runner* in the Library\* (1-18 September 2011)
2. Download the [READ@PolyU iPhone App](#)
3. Like our [Facebook Fan page](#)
4. Join the Grand Opening & the Reception for Facilitators (8 September 2011)
5. Read with the following PolyU's Leaders:

##### ■ *READ with the Council Chair - The Hon. Marjorie Yang, JP*

Date: 4 October 2011  
Time: 1 p.m. – 2 p.m.  
Venue: Exhibition Hall, Pao Yue-kong Library

[JOIN NOW!](#) ✓

##### ■ *READ with the Vice President (Academic Development) - Professor Walter Yuen*

Date: 23 September 2011  
Time: 1 p.m. – 2 p.m.  
Venue: Exhibition Hall, Pao Yue-kong Library

[JOIN NOW!](#) ✓

##### ■ *READ with the Director of Information Technology - Mr. Gerrit Bahlman*

Date: 30 September 2011  
Time: 1 p.m. – 2 p.m.  
Venue: Exhibition Hall, Pao Yue-kong Library

[JOIN NOW!](#) ✓

##### ■ *READ with the University Librarian – Mr Steve O'Connor*

Date: 14 September 2011  
Time: 1 p.m. – 2 p.m.  
Venue: Exhibition Hall, Pao Yue-kong Library

[JOIN NOW!](#) ✓



6. Share a common experience with other first year students by joining the [Discussion Sessions!](#) (19 September to 12 November 2011). 
7. Get a Tour of Mysterious Afghanistan through a changing [Afghan Gold Photo Exhibition](#) (29 August – 4 October 2011)
8. Join The Kite Runner Film Show
9. Come to the Book Fair (mid November 2011)
10. Win a fabulous prize by participating in the *READ@PolyU* Contest and sharing your reflection with us through writing, video or other creative media.

For more details: <http://www.lib.polyu.edu.hk/read/>

\* Eligibility: All PolyU full-time first year undergraduate students

[\[Top\]](#)

Publication Committee, Pao Yue-kong Library, The Hong Kong Polytechnic University, Hung Hom, Kowloon, Hong Kong | [Privacy Statements](#)

SEPTEMBER 2011 | ISSUE 25

# LIBRARY NEWSLETTER

HOME FEATURE STORY HIGHLIGHTS COLLECTIONS RESEARCH CORNER PROFILE USER EDUCATION PREFERRED LIB SCENARIO

## HIGHLIGHTS

- **New Research Carrels Now Available for Advanced Booking Online**



A total of 85 new and self check-in research carrels are available in the Research Enhancement Centre (3/F, Library) for academic and research staff as well as postgraduate students for private study. Six of the carrels are particularly designed for the students with special needs. Eligible users can reserve the carrels one day in advance and check in the carrels by swiping their smart cards on the door of the reserved carrels. For booking and more details, please visit: [http://www.lib.polyu.edu.hk/usinglib/booking\\_system](http://www.lib.polyu.edu.hk/usinglib/booking_system)

[Top]

- **Books & Journals in Compact Store 1 & 2 - Temporarily Unavailable**



To make room for more study space, the Library is in the process of relocating low used books and journals from Compact Store 1 & 2 to a remote store in Kwun Tong. Those items will be temporarily unavailable to users in these 2-3 months. In the case you need to use those materials, please consider borrowing them from HKALL or access their e-journal version, if available. For assistance, please contact the Enquiry Desk on P/F or Research Help Desk on 3/F of the Library.

The previous compact shelving areas will be converted into user space for private study and discussions. A request

service for those books and journal articles will be provided once the remote store is ready. We are sorry for any inconvenience that may cause to you.

[Top]

- **iPolyU**

**Experience a Truly Everywhere Library**

*Catalog Search at Any place Anytime!*

Library

GET iPolyU NOW

Go to [www.polyu.edu.hk/cpa/iPolyU](http://www.polyu.edu.hk/cpa/iPolyU) to learn more!

[Top]

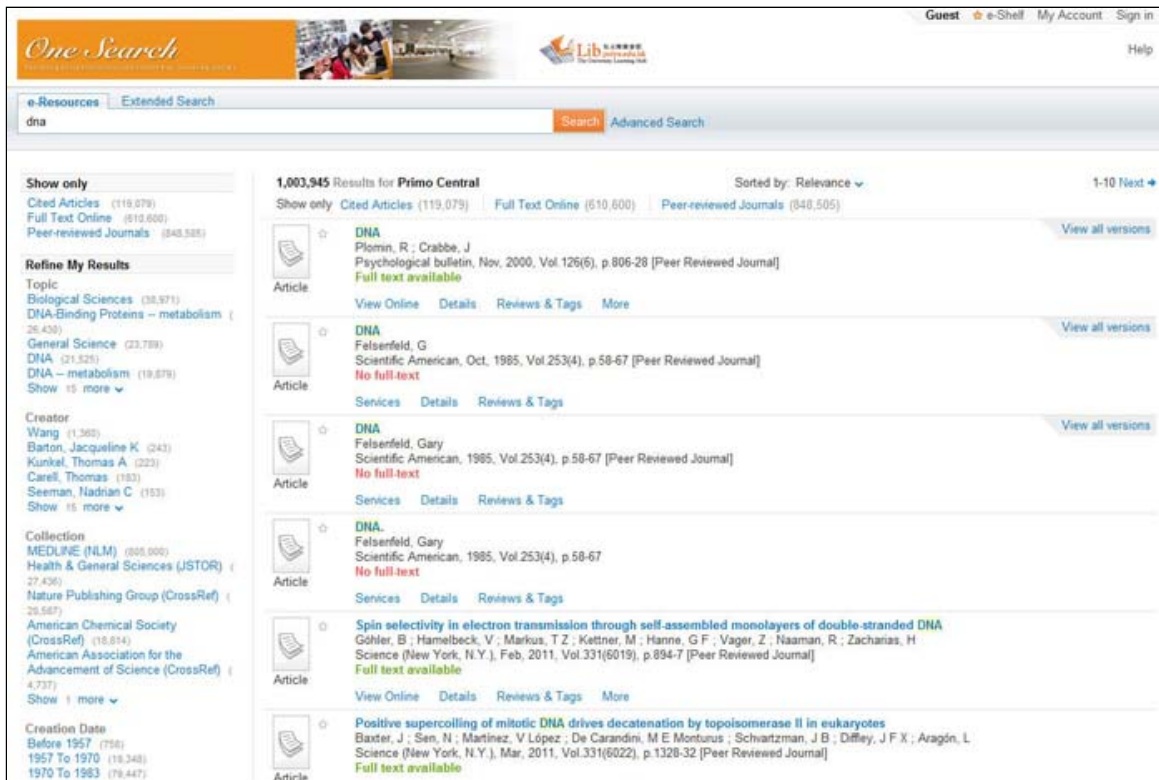
- **Renewing Library Loans on iPhone/SmartPhone**

You may now renew your loans of Library books and AV items on iPhone or smartphone using the new iPolyU App or AirPac respectively. When performing the online renewals, remember to check the new due date of your loans to make sure your renewals are successful. You may also double check your borrowing status in "My Account" on iPolyU App or AirPac.

[Top]

- **OneSearch – A New Platform for Discovering Library Resources is Coming Soon**

A new discovery platform OneSearch will be available soon. It helps you locate both printed and electronic Library resources. Stay tuned for the launch date of this platform!



[Top]

- **Library Exhibitions**

- ✦ **Student Artwork Exhibition (CPEO)**



The first exhibition, Student Artwork Exhibition by CPEO, was held in our Exhibition Hall from 11-15 June 2011. It featured Chinese calligraphy, Chinese paper-cutting, felt art, glass art, jumping clay, mosaic art, painting, sketching, paper sculpture and photography, from the PolyU Community. It was well received by PolyU staff, students and the public.

Like this Exhibition? You may be interested in these [Library Resources](#).

[Top]

✦ PolyU Design Annual Show, Selected Works (SD)



Organized by the School of Design, the PolyU Design Annual Show 2011 was held in the Library Exhibition Hall from 28 June to 19 August 2011. This exhibition showcased how future designers from Advertising, Digital media, Environment & Interior, Industrial & Product, and Visual Communication disciplines turned fresh ideas into works of beauty and function. Like this Exhibition? You may be interested in these [Library Resources](#).

[\[Top\]](#)

✦ Current Exhibition:

In celebration of the launching of the [READ@PolyU](#) common reading programme, we proudly present the "Afghan Gold Photo Exhibition" by Luke Powell (<http://www.lukepowell.com/>). The photos are on show until 4 October 2011. For more details, please visit: <http://www.lib.polyu.edu.hk/exhibitions>

[\[Top\]](#)

Publication Committee, Pao Yue-kong Library, The Hong Kong Polytechnic University, Hung Hom, Kowloon, Hong Kong | [Privacy Statements](#)

SEPTEMBER 2011 | Issue 25

# LIBRARY NEWSLETTER

HOME FEATURE STORY HIGHLIGHTS COLLECTIONS RESEARCH CORNER PROFILE USER EDUCATION PREFERRED LIB SCENARIO

## COLLECTIONS

### • e-Learning Programme --- Clarity English Programs

Clarity English Programs help students to improve their English grammar, broaden their vocabulary and sharpen up their speaking skills. Students will also learn how to approach reading, lectures and essays with confidence. It will equip students with the knowledge and skills they need to find the job they want.



#### \* Active Reading

Students can listen to a range of native speakers reading the texts, helping them to identify sense groups and develop their chunking skills.



#### \* Clear Pronunciation

It includes over 1,000 audio clips and 50 videos which provide both comprehensive input for the sounds, and models for students to copy. The Recorder enables users to record their voice and assess their pronunciation against a native speaker.



#### \* Customer Service Communication Skills

To help students develop skills in listening, soft skills, grammar, pronunciation and reading. Each of these skills relates to communication needs in a customer service environment.



#### \* English for Hotel Staff

It is designed to provide a course of interactive materials for staff in the hotel industry who wish to improve and upgrade their specialist English language skills, or for students preparing for hotel employment.



#### \* It's Your Job: Take Control of Your Career

It's Your Job takes a structured and analytical approach to the entire process of job-seeking, from deciding on your career all the way through to accepting a job offer and negotiating your salary.





\* **Study Skills Success**

It is for students in their first year in higher education. It provides comprehensive coverage of skills and resources that will enable them to approach their academic studies effectively and with confidence.

The information is from website of Clarity Language Consultants Ltd at <http://www.clarityenglish.com/index.php>

[Top]

• **e-Reference --- Credo Reference**

Credo Reference is an online reference collection, and it features full-text content from hundreds of reference books covering a broad range of subjects. There are 500 titles, over 3 million entries, 200,000+ images (art, diagrams, maps and photos), and over 100,000 audio pronunciation files and sound clips. Subjects covers art, business, bilingual dictionaries, biographies, dictionaries, encyclopedias, quotations, geography, history, language, law, literature, medicine, music, philosophy, psychology, religion, science, social science, technology.



\* **Image**

Gogh, Vincent van (Dutch)  
[Fishing in the Spring. Pont de Clichy, 1887](#)



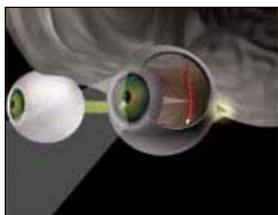
\* **Music**

Beethoven, Ludwig van  
[Symphony No. 5, First Movement](#)



\* **Historical Map**

[Concise Atlas of World History Renaissance Europe \(1400-1492\)](#)



\* **Video**

[How the eye works](#)



\* **Concept Map**

[Bob Dylan](#)

The information is from website of Credo Reference at <http://www.credoreference.com/home.do>

[Top]

SEPTEMBER 2011 | ISSUE 25

# LIBRARY NEWSLETTER

HOME FEATURE STORY HIGHLIGHTS COLLECTIONS RESEARCH CORNER PROFILE USER EDUCATION PREFERRED LIB SCENARIO



## RESEARCH CORNER

### • Managing References and Bibliographies

PolyU staff and students can use RefWorks, a web-based bibliographic management tool, to create your own personal database of references. You can use it anywhere and anytime on a PC with Internet access. This tool allows you to:

- save references retrieved from various databases and library catalogues
- insert in-text references while you write your paper
- format your citations and create a reference list in a citation style of your choice, e.g., APA, MLA, etc.

### \* Setting up Your Refworks Account

- Go to the [RefWorks](#) Login page using a PC which is connected to the PolyU's campus network, e.g. PC workstations in the Library.
- From the login window, click the "Sign up for an Individual Account" link.
- Fill in your information and create your login name and password. Then, click Register.

### \* Getting Citations Into RefWorks

- **Importing records from the Library Catalog**
  1. Perform a search in the Library Catalogue.
  2. In the item record, click "Export to RefWorks".
  3. You will be prompted to log in to RefWorks if you have not done so.
  4. The record should be stored in the Last Imported Folder.
- Importing records from Library Databases  
The instruction of importing records from selected online databases can be found [here](#).

### \* Using Write-N-Cite

Write-N-Cite is a widget for Microsoft Word that makes it easier to insert references from your RefWorks account into your paper. Please refer to the instruction [here](#) for installing Write-N-Cite.

- Open a new document in Microsoft Word.
- Launch Write-N-Cite.
- Put the cursor in your word document where the reference should be inserted; click **Cite** next to the reference in the Write-N-Cite window.
- Save your word document when finished.
- To format in-text citations in your paper and generate a reference list, click on **Bibliography** in the Write-N-Cite window.
- Select an output style, and click on **Create Bibliography**.

- \* ○ Citations in your paper will be formatted properly and a reference list will be inserted to the end of your paper.

\* **Refworks Help**

- [RefWorks Tutorial](#) - interactive tutorial that provides you with step-by-step instructions on using RefWorks.
- [RefWorks Quick Start Guide](#) - handy manual that gives you quick tips on RefWorks.

[\[Top\]](#)

Publication Committee, Pao Yue-kong Library, The Hong Kong Polytechnic University, Hung Hom, Kowloon, Hong Kong | [Privacy Statements](#)

SEPTEMBER 2011 | ISSUE 25

# LIBRARY NEWSLETTER

HOME FEATURE STORY HIGHLIGHTS COLLECTIONS RESEARCH CORNER PROFILE USER EDUCATION PREFERRED LIB SCENARIO



## PROFILE

### • New Librarians on Board

Ms Becky Lee and Ms Wong Wan Shan have recently joined the Library as [Faculty Librarian \(Faculty of Health and Social Sciences\)](#) and [Faculty Librarian \(Faculty of Humanities\)](#) respectively. The team of seven Faculty/Schools Librarians is committed to serving and liaising with faculty staff and students on their teaching and learning needs, providing information consultancy, collection development support and various types of user services.

[Ms Ada Cheung](#) has joined us in June as Assistant Librarian in Cataloguing. Ada is mainly responsible for the cataloguing of English materials and PolyU Collections.

A big welcome to [Mrs Michelle Hsu](#), our newly appointed Assistant Librarian (Infrastructure). Michelle is responsible for space planning and infrastructure development associated with the Library Revitalization and Extension Project.

### • Senior Staff Promotion

The Library is very pleased to announce the following staff promotions effective 1 June 2011 :

[Ms Lisa Kwan](#) is promoted to Associate Librarian (Digital & Infrastructure Services). Lisa is responsible for the effective planning, delivery and development of the Library's systems and digital services as well as building infrastructure.

[Ms Cindy Lui](#) is promoted to Associate Librarian (Acquisitions and Cataloguing). Cindy is responsible for the management of various major library budget. The management of all the processes for the acquisitions and bibliographic control of materials in print and electronic form is also her key accountability.

[Ms Mei Li](#) is promoted to Senior Assistant Librarian (Collection Development). In her new position, Mei is responsible for all aspects of collection development including the creating of local digital content and the

- **Farewell**

In mid July, we bid farewell to Ms Winnie Chim, our former Associate Librarian (Academic Liaison and Deputy), who took up early retirement and ended her 19 years' of dedicated service in the Library. Under Winnie's leadership, the Library has flourished and accomplished a lot, especially in the area of faculty liaison and user services. We wish Winnie well as she ventures to her new life in Canada.



SEPTEMBER 2011 | Issue 25

# LIBRARY NEWSLETTER

HOME FEATURE STORY HIGHLIGHTS COLLECTIONS RESEARCH CORNER PROFILE USER EDUCATION PREFERRED LIB SCENARIO



## User Education

### • Successful Story On Integrating Information Literacy Programme to Academic Curriculum – BRE 377

Information Literacy in Subject BRE377 Research Methods

Subject Leader: Dr. Y.H. Chiang

Subject Lecturer: Prof. Bo Tang, Dr. Daniel Chan

#### \* Background

BRE 377 Research Methods is a compulsory subject for BSc(Hons) in Building Engineering and Management, Property Management and Surveying students. There were about 250 students studying the subject in the last academic year. Introduced by Faculty Librarian of FCE, Ms. Celia Chow, they learned about our Information Literacy Programme and 9 face-to-face library workshops were conducted. Prior to the workshops, students were required to complete the Online Information Literacy Programme.

#### \* How to Use the Programme?

As the students need to complete their dissertation for graduation, the Library's Information Literacy Programme (ILP) provided useful guidelines and tips for students on searching and manipulating reference materials based on their chosen topics before and during the dissertation process. Library workshops demonstrated real-life practices of searching relevant information and data in relation to their lecture on research theories. The students greatly benefited from the Information Literacy Programme.

#### \* How Useful was the Programme to Students?

The quality of the initial concise / final detailed dissertation proposals was better after the students have attended library workshops. As commented by Dr. Chan, students knew better and were more confident in choosing a suitable dissertation topic, performed effective database search, conducted more extensive literature review and were able to identify some critical issues or missing gaps for their dissertations.

#### \* Will you recommend your faculty/department to use the Information Literacy programmes offered by the Library? Why?

Dr. Chan gave a definite yes to the question as he found that students could learn useful guidelines and tips from the programme and performed better in their dissertations. The programme was quite comprehensive and satisfactory. The subject lecturers would definitely continue to have the IL programme in their BRE377.

[\[Top\]](#)

SEPTEMBER 2011 | Issue 25

# LIBRARY NEWSLETTER

HOME FEATURE STORY HIGHLIGHTS COLLECTIONS RESEARCH CORNER PROFILE USER EDUCATION PREFERRED LIB SCENARIO

## PREFERRED LIBRARY SCENARIO



We are proud to announce that the Phase 1 of the Library Revitalization Project on the 3/F & P/F has been completed. Do come and explore our new services and facilities!

- **The Research Enhancement Centre (REC) is Ready!**

The newly renovated area on the 3/F is now the Research Enhancement Centre (REC). The Information Services Section has moved to the REC with expanded service dimensions. In the Centre, professional Librarians continue to provide information expertise to users and serve as **partners of researchers in the information searching and management process**.

**The Research Help Desk** is the place where professional librarians assist researchers with different information needs in the research cycle; and the **Service & Technical Support Desk** provides enquiry support on IT and other library services, such as ILL and Document Delivery.

Faculty/Schools Librarians provide Information Consultancy service; give advice to users on the use of online resources, the **Reference Collection**, and an array of research tools.

Facilities and applications are available in the Research Enhancement Center **to supplement the research process:**

- \* **IT Lounge**

33 network connected workstations installed with highly specialized software applications. Wireless printing is also available in the vicinity.

- \* **Individual Research Carrels**

85 research carrels for PG, research & academic staff

- \* **Teaching & Learning Labs**

Two multi-functional rooms available for Information Literacy classes and different instruction sessions

- \* **Seminar Room**

For different purposes such as meetings, focus group gatherings, library seminars, etc.

- \* **Service & Technical Support**

Provides enquiry support on IT and other library services

- \* **e-Learning Room**

Users could make use of all the facilities, attend workshops and events at the above venues to **build research competency**, refine research skills and keep in close contact with fellow researchers.

[\[Top\]](#)

- **Current Awareness Centre**

Equipped with 12 express terminals, the Current Awareness Centre (P/F) provides a lounge type environment for Library users with access to up-to-date information through New Book Display, popular magazines and current local

and international newspapers.

[\[Top\]](#)

- **Exhibition Hall**

The Exhibition Hall (P/F) provides a roomy venue for formal and informal learning, aimed at promoting “All-round Student Development”. For venue booking and exhibition calendar, please visit:  
<http://www.lib.polyu.edu.hk/exhibitions>.

[\[Top\]](#)

- **LibCafe@PolyU**

Opened in May 2011, the LibCafe@PolyU (P/F) offers 42 seats, with a window counter outside the Library for take-away purchase. It provides a meeting place to facilitate social interaction for the exchange of ideas and discussion. Library users are welcomed to enjoy their food and drink **inside the Cafe**.

[\[Top\]](#)